



CSI
Certificazione e Testing

RAPPORTO DI PROVA
(Test Report)

N° **0225/DEU/CPD/06**

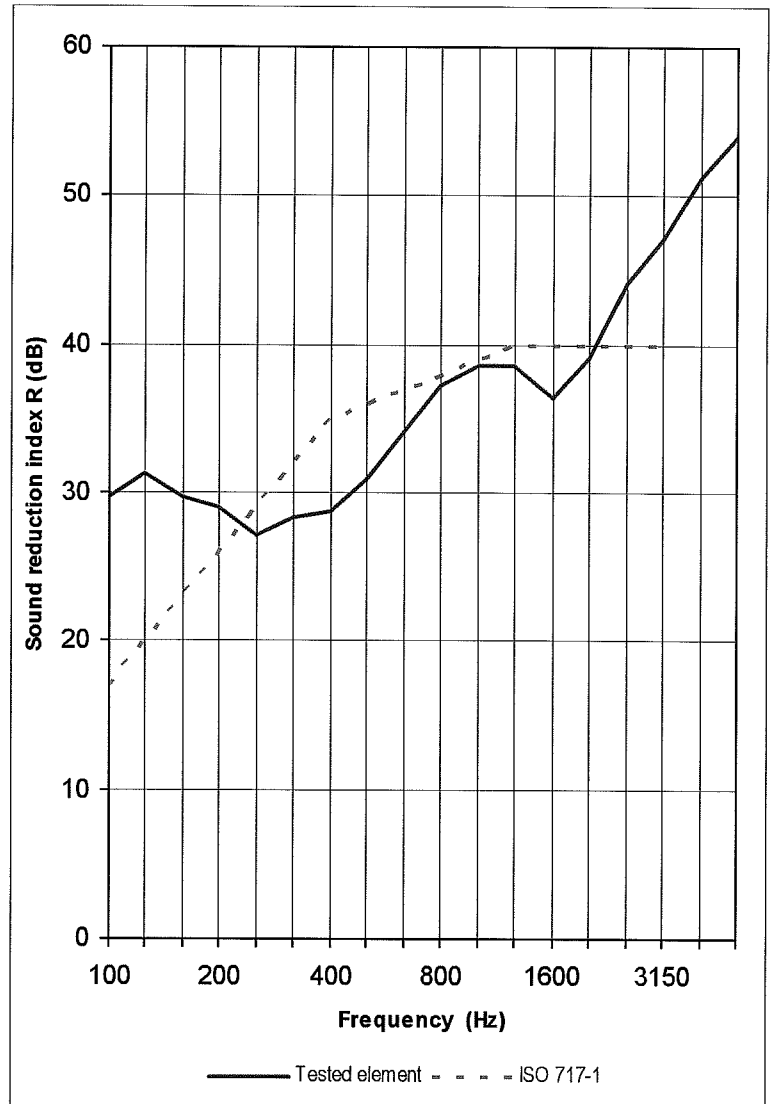
Pag. **12**
di/of
pag. **31**

Data: **27/10/2006**
Date:

Tested element: SGG PLANILUX 8 (6) SGG STADIP PROTECT 44-2

Sample surface area S = 1,9 m²
Volume of receiving room V = 86 m³
Volume of source room 98 m³

FREQ. Hz	R dB
100	29,7
125	31,4
160	29,7
200	29,0
250	27,2
315	28,4
400	28,8
500	31,0
630	34,2
800	37,3
1000	38,6
1250	38,6
1600	36,5
2000	39,1
2500	44,1
3150	47,1
4000	51,3
5000	53,9



Rating according to ISO 717-1 (in the band 100 ÷ 3150 Hz) based on laboratory measurements:

R_w (C; C_{tr}) = 36 (0 ; -2) dB