



**CSI**  
Certificazione e Testing

**RAPPORTO DI PROVA**  
(Test Report)

N° **0225/DEU/CPD/06**

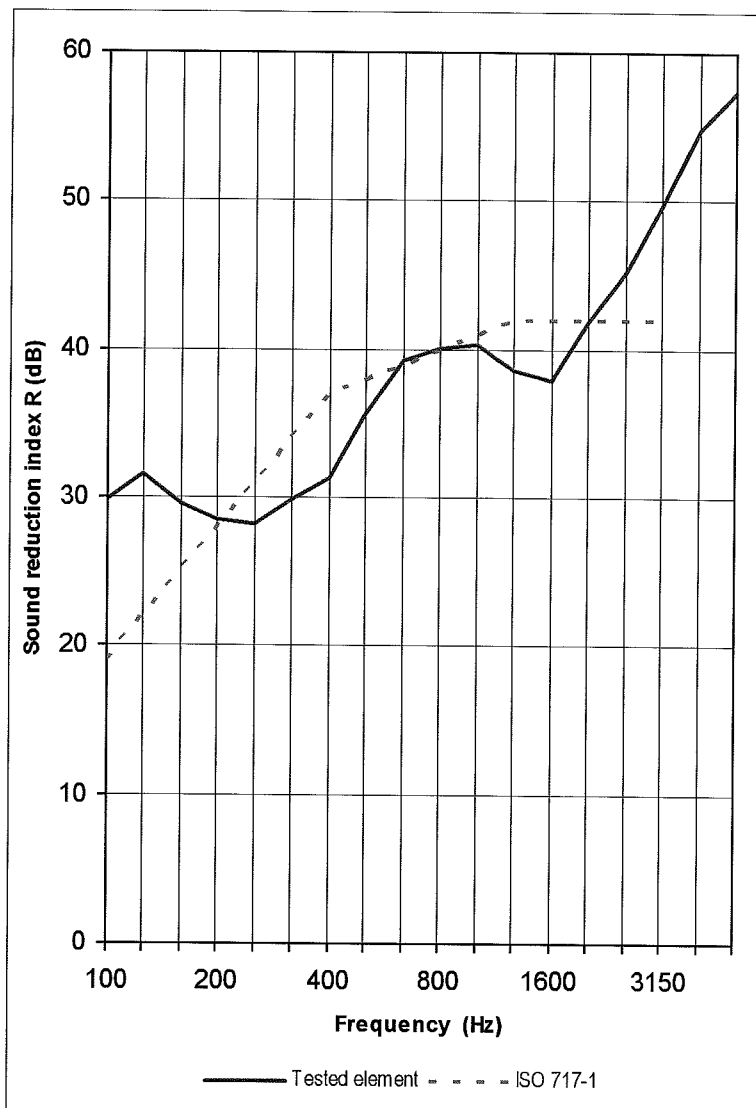
Pag. **30**  
di/of  
pag. **31**

Data: **27/10/2006**  
Date:

Tested element: **SGG PLANILUX 10 (6) SGG STADIP PROTECT 44-2**

Sample surface area            S =            1,9 m<sup>2</sup>  
Volume of receiving room        V =            86 m<sup>3</sup>  
Volume of source room                                    98 m<sup>3</sup>

FREQ. Hz	R dB
100	29,9
125	31,6
160	29,6
200	28,5
250	28,3
315	29,9
400	31,4
500	35,7
630	39,3
800	40,1
1000	40,4
1250	38,6
1600	37,9
2000	41,8
2500	45,2
3150	49,6
4000	54,7
5000	57,3



Rating according to ISO 717-1 (in the band 100 ÷ 3150 Hz) based on laboratory measurements:

**$R_w (C; C_{tr}) = 38 (0; -3) \text{ dB}$**