



CSI
Certificazione e Testing

RAPPORTO DI PROVA
(Test Report)

N° **0225/DEU/CPD/06**

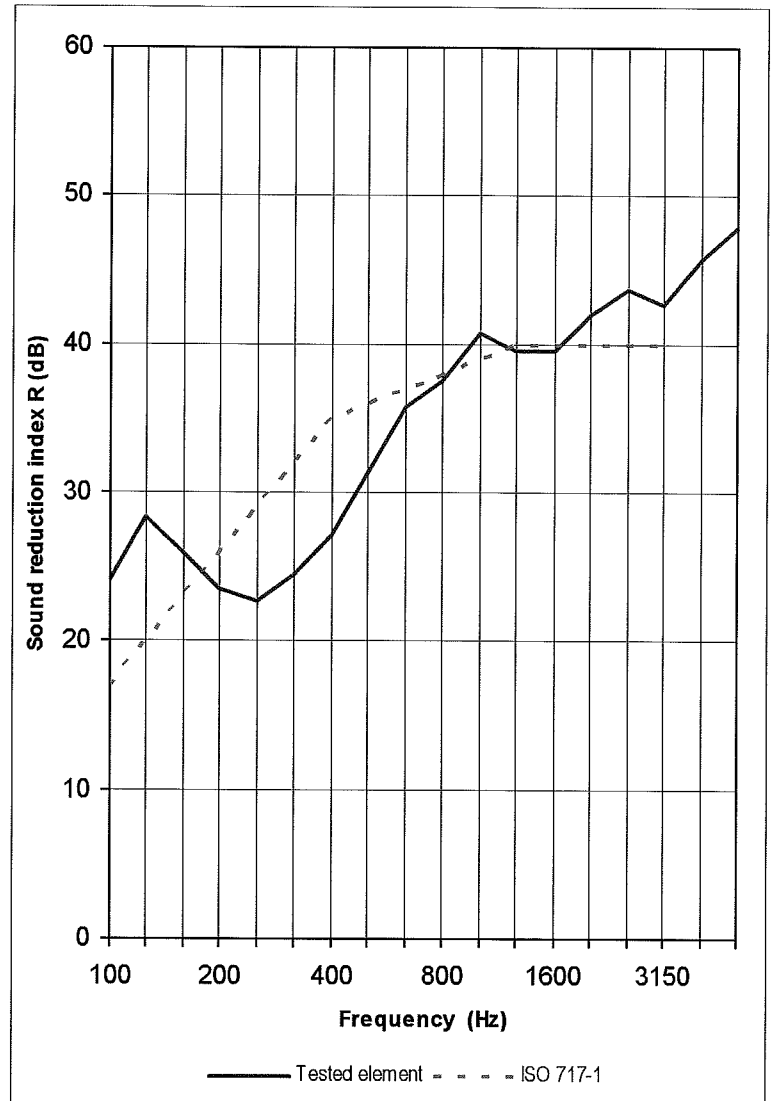
Pag. **25**
di/of
pag. **31**

Data: **27/10/2006**
Date:

Tested element: **SGG PLANILUX 4 (12) SGG PLANILUX 8**

Sample surface area S = 1,9 m²
Volume of receiving room V = 86 m³
Volume of source room 98 m³

FREQ. Hz	R dB
100	24,1
125	28,4
160	26,0
200	23,6
250	22,8
315	24,5
400	27,2
500	31,4
630	35,8
800	37,6
1000	40,7
1250	39,6
1600	39,6
2000	42,0
2500	43,7
3150	42,7
4000	45,8
5000	47,9



Rating according to ISO 717-1 (in the band 100 ÷ 3150 Hz) based on laboratory measurements:

$R_w (C; C_{tr}) = 36 (-2 ; -5) \text{ dB}$