



CSI
Certificazione e Testing

RAPPORTO DI PROVA
(Test Report)

N° **0225/DEU/CPD/06**

Pag. **23**

di/of

pag. **31**

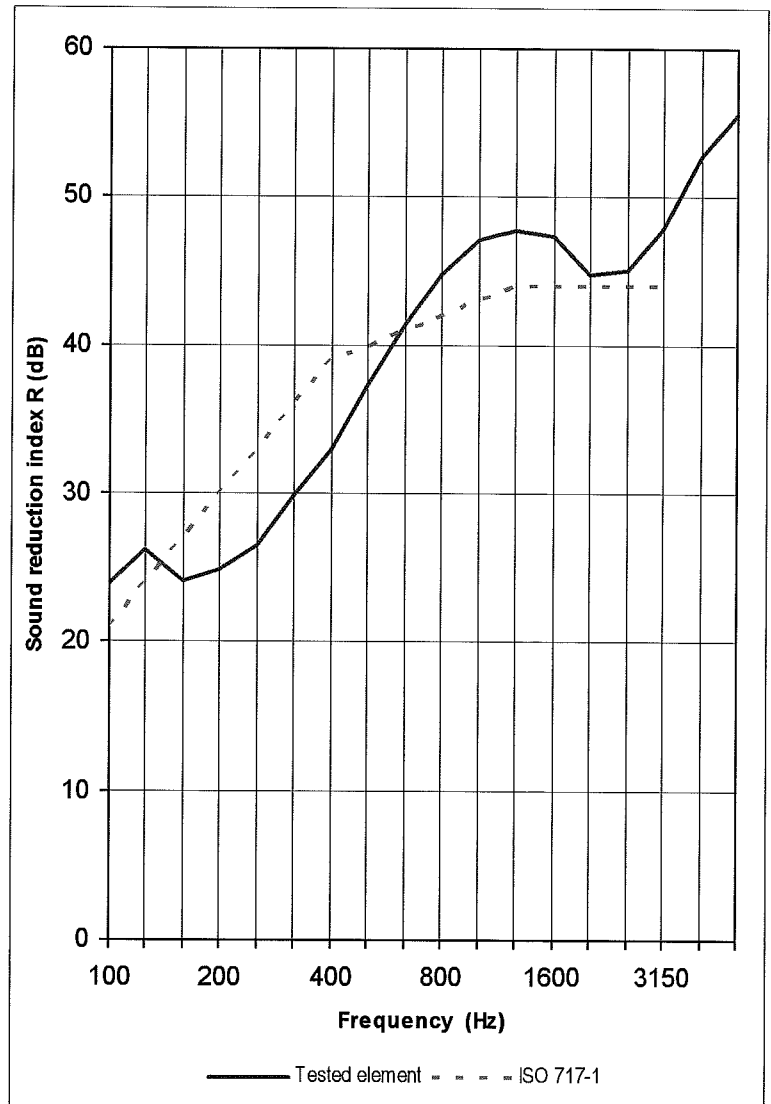
Data: **27/10/2006**

Date:

Tested element: **SGG PLANILUX 6 (16) SGG STADIP SILENCE 44-1**

Sample surface area S = 1,9 m²
Volume of receiving room V = 86 m³
Volume of source room 98 m³

FREQ. Hz	R dB
100	23,9
125	26,3
160	24,1
200	24,9
250	26,5
315	29,9
400	33,0
500	37,2
630	41,5
800	44,8
1000	47,1
1250	47,8
1600	47,4
2000	44,8
2500	45,1
3150	47,9
4000	52,7
5000	55,6



Rating according to ISO 717-1 (in the band 100 ÷ 3150 Hz) based on laboratory measurements:

$R_w(C; C_{tr}) = 40 (-2; -6)$ dB