



CSI
Certificazione e Testing

RAPPORTO DI PROVA
(Test Report)

N° **0225/DEU/CPD/06**

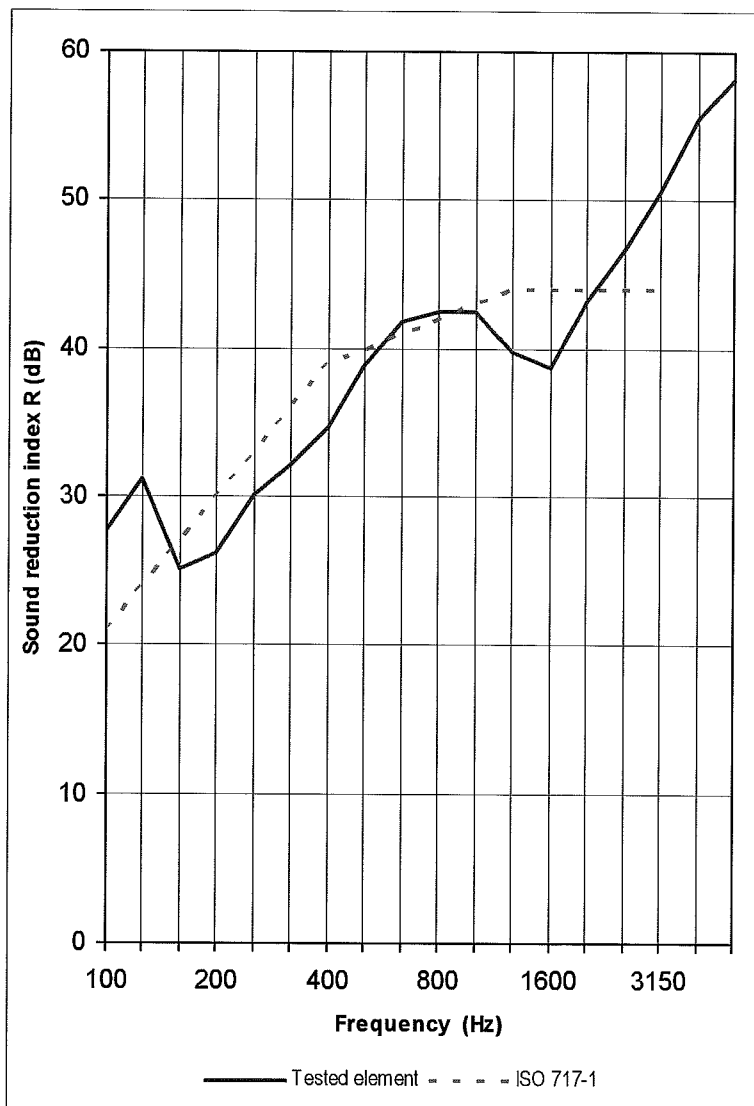
Pag. **22**
di/of
pag. **31**

Data: **27/10/2006**
Date:

Tested element: **SGG PLANILUX 10 (12) SGG STADIP PROTECT 44-2**

Sample surface area S = 1,9 m²
Volume of receiving room V = 86 m³
Volume of source room 98 m³

FREQ. Hz	R dB
100	27,7
125	31,2
160	25,1
200	26,2
250	30,1
315	32,2
400	34,7
500	38,9
630	41,8
800	42,5
1000	42,5
1250	39,8
1600	38,8
2000	43,2
2500	46,7
3150	50,6
4000	55,6
5000	58,1



Rating according to ISO 717-1 (in the band 100 ÷ 3150 Hz) based on laboratory measurements:

$R_w (C; C_{tr}) = 40 (-1 ; -4) \text{ dB}$