



**CSI**  
Certificazione e Testing

**RAPPORTO DI PROVA**  
(Test Report)

N° **0225/DEU/CPD/06**

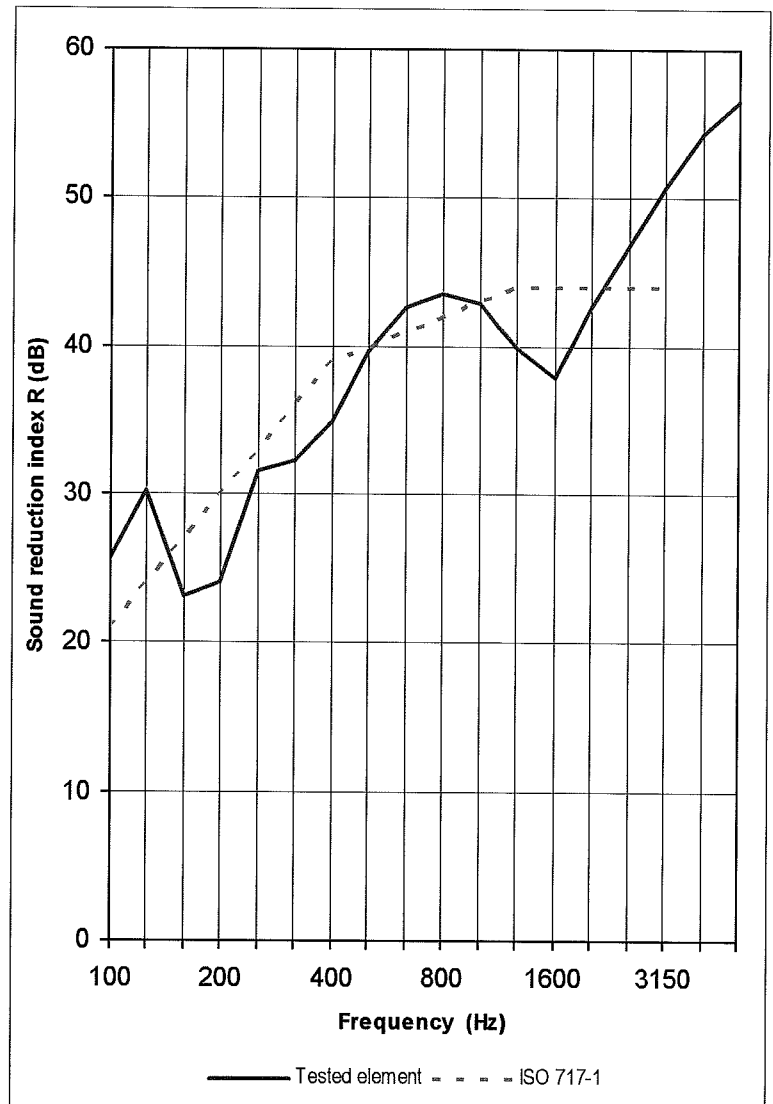
Pag. **20**  
di/of  
pag. **31**

Data: **27/10/2006**  
Date:

Tested element: **SGG PLANILUX 10 (16) SGG STADIP PROTECT 44-2**

Sample surface area      S =      1,9 m<sup>2</sup>  
Volume of receiving room      V =      86 m<sup>3</sup>  
Volume of source room           98 m<sup>3</sup>

FREQ. Hz	R dB
100	25,7
125	30,3
160	23,1
200	24,1
250	31,6
315	32,3
400	35,0
500	39,7
630	42,6
800	43,6
1000	42,9
1250	39,9
1600	37,9
2000	42,7
2500	46,8
3150	50,7
4000	54,4
5000	56,5



Rating according to ISO 717-1 (in the band 100 ÷ 3150 Hz) based on laboratory measurements:

**R<sub>w</sub> (C; C<sub>tr</sub>) = 40 (-2 ; -5) dB**