



CSI
Certificazione e Testing

RAPPORTO DI PROVA
(Test Report)

N° **0225/DEU/CPD/06**

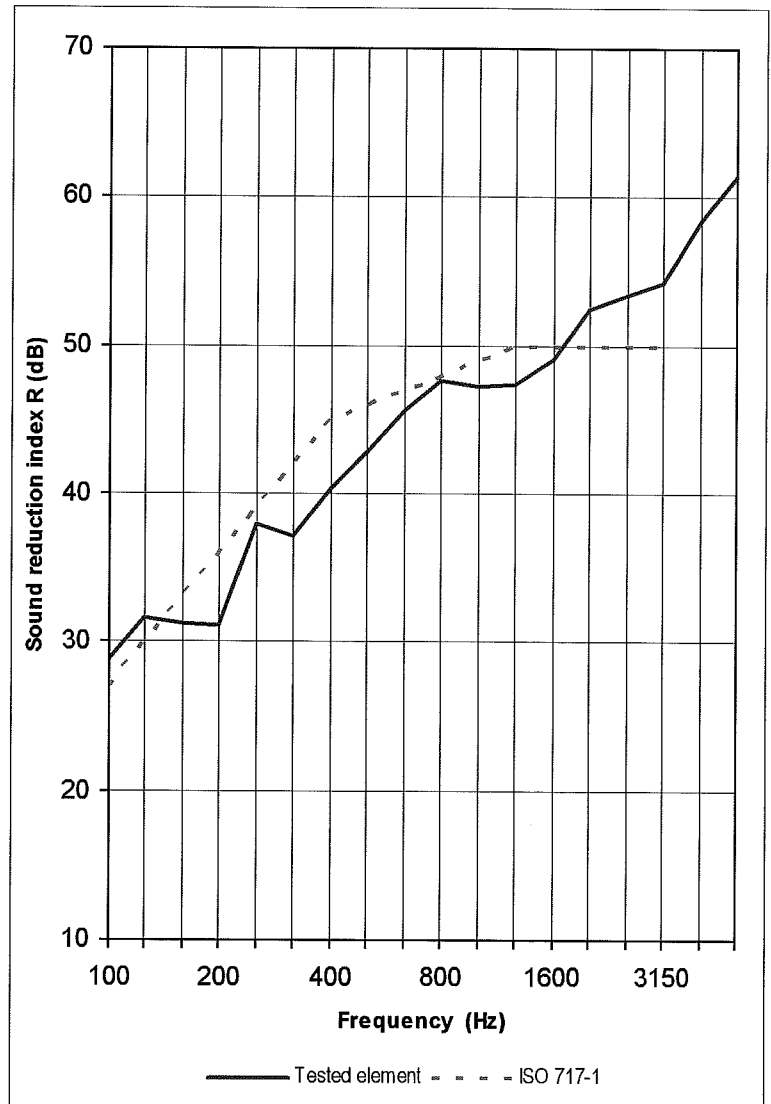
Pag. **17**
di/of
pag. **31**

Data: **27/10/2006**
Date:

Tested element: **SGG STADIP SILENCE 44-2 (20) SGG STADIP PROTECT 64-2**

Sample surface area S = 1,9 m²
Volume of receiving room V = 86 m³
Volume of source room 98 m³

FREQ. Hz	R dB
100	28,9
125	31,7
160	31,2
200	31,1
250	38,0
315	37,2
400	40,4
500	42,8
630	45,6
800	47,7
1000	47,2
1250	47,4
1600	49,2
2000	52,5
2500	53,4
3150	54,2
4000	58,4
5000	61,4



Rating according to ISO 717-1 (in the band 100 ÷ 3150 Hz) based on laboratory measurements:

$R_w (C; C_{tr}) = 46 (-1 ; -5) \text{ dB}$