



CSI
Certificazione e Testing

RAPPORTO DI PROVA
(Test Report)

N° **0225/DEU/CPD/06**

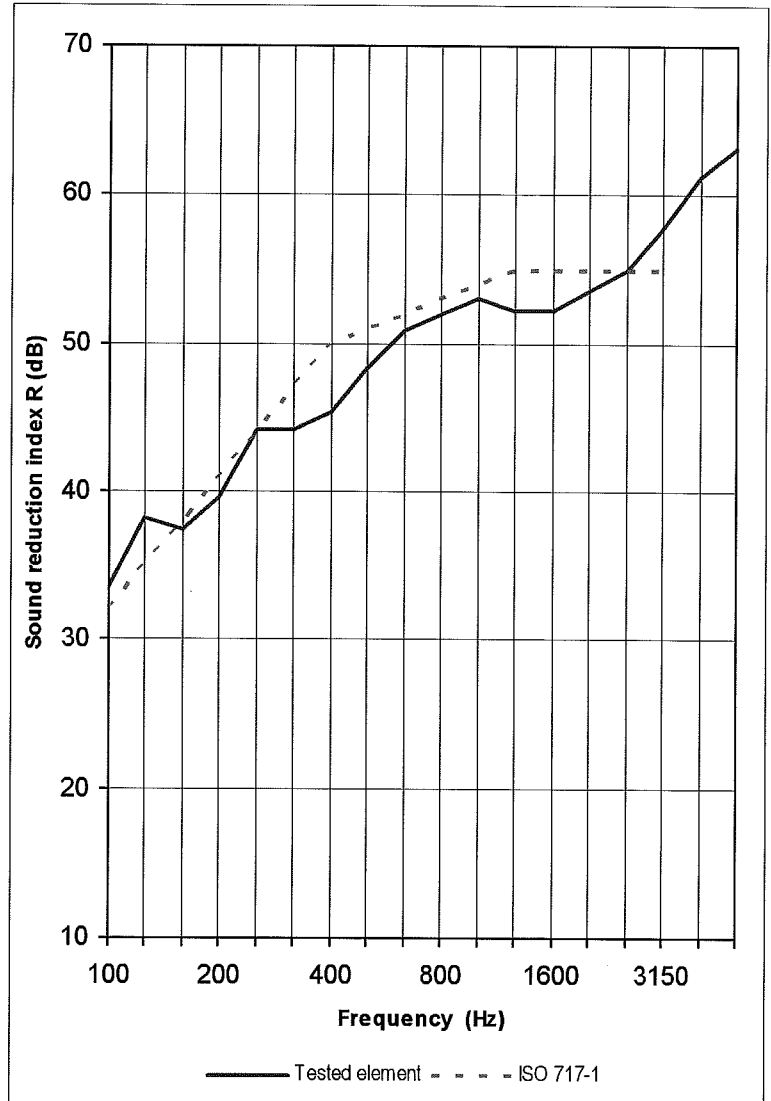
Pag. **14**
di/of
pag. **31**

Data: **27/10/2006**
Date:

Tested element: **SGG STADIP SILENCE 64-2 (24) SGG STADIP SILENCE 86-2**

Sample surface area S = 1,9 m²
Volume of receiving room V = 86 m³
Volume of source room 98 m³

FREQ. Hz	R dB
100	33,6
125	38,3
160	37,4
200	39,6
250	44,2
315	44,2
400	45,4
500	48,3
630	50,9
800	52,0
1000	53,0
1250	52,3
1600	52,3
2000	53,6
2500	55,0
3150	57,8
4000	61,3
5000	63,2



Rating according to ISO 717-1 (in the band 100 ÷ 3150 Hz) based on laboratory measurements:

$R_w (C; C_{tr}) = 51 (-1 ; -4) \text{ dB}$