

CSI
Certificazione e Testing

RAPPORTO DI PROVA
(Test Report)

N° **0225/DEU/CPD/06**

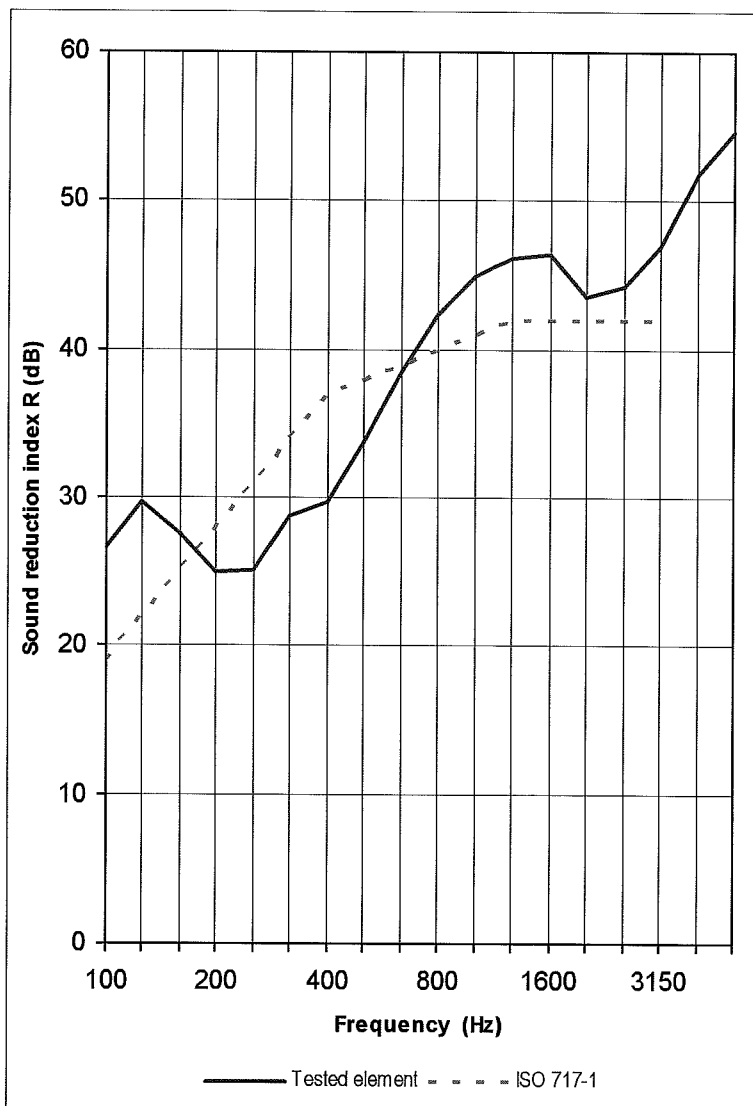
Pag. **11**
di/of
pag. **31**

Data: **27/10/2006**
Date:

Tested element: **SGG PLANILUX 6 (12) SGG STADIP SILENCE 44-1**

Sample surface area S = 1,9 m²
Volume of receiving room V = 86 m³
Volume of source room 98 m³

FREQ. Hz	R dB
100	26,7
125	29,7
160	27,6
200	25,0
250	25,1
315	28,8
400	29,7
500	33,8
630	38,5
800	42,4
1000	44,9
1250	46,2
1600	46,4
2000	43,6
2500	44,2
3150	47,0
4000	51,8
5000	54,6



Rating according to ISO 717-1 (in the band 100 ÷ 3150 Hz) based on laboratory measurements:

R_w (C; C_{tr}) = 38 (-1 ; -4) dB