



CSI
Certificazione e Testing

RAPPORTO DI PROVA
(Test Report)

Pag. **8**
di/of
pag. **31**

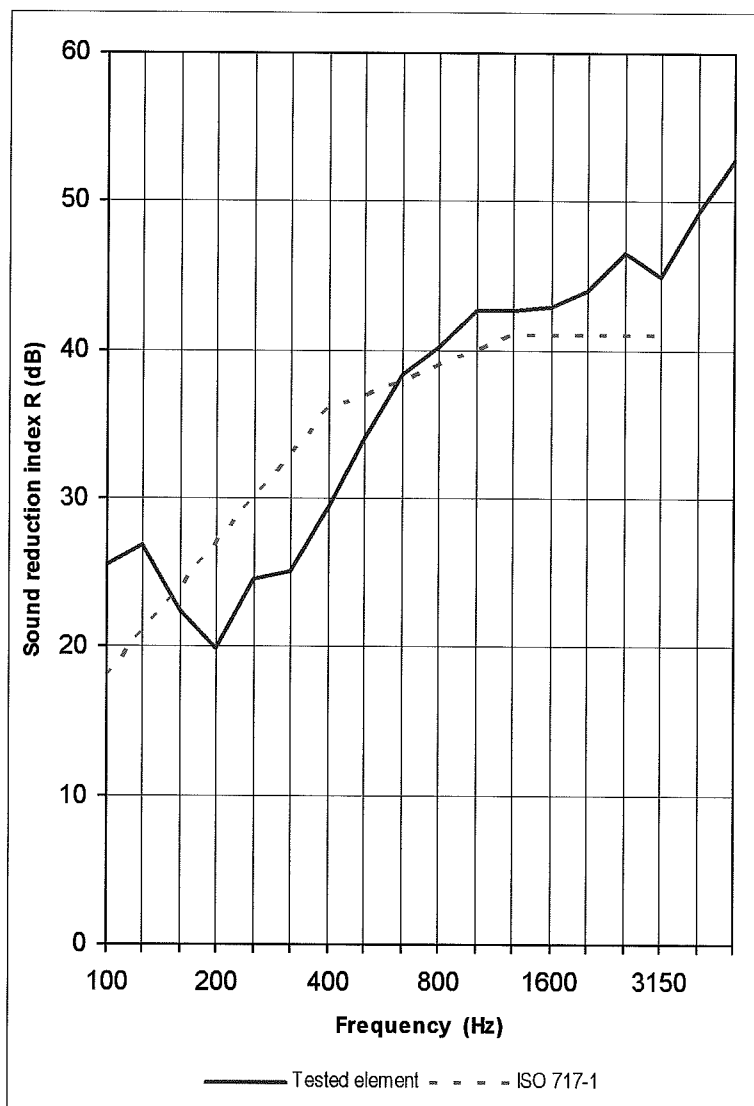
N° **0225/DEU/CPD/06**

Data: **27/10/2006**
Date:

Tested element: **SGG PLANILUX 4 (16) SGG STADIP PROTECT 44-2**

Sample surface area S = 1,9 m²
Volume of receiving room V = 86 m³
Volume of source room 98 m³

FREQ. Hz	R dB
100	25,5
125	26,9
160	22,4
200	19,9
250	24,6
315	25,2
400	29,4
500	34,0
630	38,3
800	40,2
1000	42,7
1250	42,6
1600	42,9
2000	44,0
2500	46,6
3150	45,0
4000	49,3
5000	52,7



Rating according to ISO 717-1 (in the band 100 ÷ 3150 Hz) based on laboratory measurements:

$R_w (C; C_{tr}) = 37 (-2 ; -6) \text{ dB}$