

# Evidence of performance

## Airborne sound insulation of building elements

Test Report  
No. 13-001521-PR01  
(PB 2-H01-04-en-01)

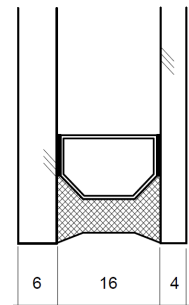


Client **SAINT-GOBAIN POLSKA Sp.Z.o.o.**  
**ODDZIAL GLASSOLUTIONS**  
ul. Kolejowa 1  
32-312 Jaroszewiec  
Poland

### Basis

EN ISO 10140-1 : 2010  
+A1:2012  
EN ISO 10140-2 : 2010  
EN ISO 717-1 : 1996+A1:2006  
13-001521-PR01 (PB 2-H01-04-de-01) dated 26th of June 2013.

### Representation



Product	Insulating glass unit
Designation	SGG Climaplus
External dimension (W x H)	1230 mm x 1480 mm
Configuration	6/16/4
Gas filling	Argon
Area related mass	24.8 kg/m <sup>2</sup>
Specials	-/-

### Instructions for use

This test report serves to demonstrate the airborne sound insulation of a building element. Applicable for Germany  $R_w$  corresponds to  $R_{w,P}$  for DIN 4109 Annex 1 table 40

Weighted sound reduction index  $R_w$   
Spectrum adaptation terms C and  $C_{tr}$



$$R_w (C; C_{tr}) = 35 (-1; -5) \text{ dB}$$

### Validity

The data and results given relate solely to the tested and described specimen.

Testing the sound insulation does not allow any statement to be made on further characteristics of the present construction regarding performance and quality.

ift Rosenheim  
03.07.2013

### Notes on publication

The ift Guidance Sheet "Conditions and Guidance for the Use of ift Test Documents" applies. The cover sheet can be used as abstract.

Dr. Joachim Hessinger, Dipl.-Phys.  
Head of Testing Department  
Building Physics

Till Stübgen, Dipl.-Ing. (FH)  
Operating Testing Officer  
Building Acoustics

### Contents

The test report contains a total of 7 pages:

- 1 Object
  - 2 Procedure
  - 3 Detailed results
  - 4 Instructions for use
- Data sheet (1 page)



## Airborne sound insulation of building elements

Test Report 13-001521-PR01 (PB 2-H01-04-en-01) dated 03.07.2013

Client SAINT-GOBAIN POLSKA Sp.Z.o.o.  
ODDZIAŁ GLASSOLUTIONS, 32-312 Jaroszewiec (Poland)

# 1 Object

## 1.1 Description of test specimen (All dimensions in mm)

<b>Component</b>	Insulating glass unit
Product designation	SGG Climaplus
External dimension (W x H)	1230 mm x 1480 mm
Visible Size (W x H)	1200 mm x 1450 mm
Total Thickness	
On the edge	26.0 mm
In the middle of pane	26.3 mm
Area related mass kg/m <sup>2</sup>	24.8 kg/m <sup>2</sup>
Configuration	6/16/4
Pane temperature in °C	25°C
Spacer	
Material	Aluminium
Manufacturer	Alu-Pro
Edge seals	Two planes, total width 10-11 mm
external Type	13818240837/10, 23818380110
Manufacturer	IGK
internal Type	511 53820398
Manufacturer	IGK
Edge cover	Edge cover 3-4 mm
Gas filling in cavity	acc. to Analysis at <b>ift</b>
Type of gas	Argon
Volume in %	96 %

The description is based on inspection of the test specimen at **ift** Laboratory for Building Acoustics. Article designations / numbers as well as material specifications were given by the client.

## 1.2 Mounting in test rig

Test rig	Window test rig with suppressed flanking transmission acc. to EN ISO 10140-5: 2010; the test rig includes a 5 cm continuous acoustic break which is sealed in the test opening with elastic sealant.
Mounting of test specimen	Test specimen mounted by <b>ift</b> Laboratory for Building Acoustics.
Mounting conditions	The unit was fitted at a distance of 5 mm into a wooden frame of 25 mm x 25 mm cross section. The cavity between test rig and glazing beads was completely filled with plastic sealant type Perennator 2001 S grey.
Mounting position	according to EN ISO 10140-1:2010+A1:2012 Annex D


**Airborne sound insulation of building elements**

Test Report 13-001521-PR01 (PB 2-H01-04-en-01) dated 03.07.2013

 Client **SAINT-GOBAIN POLSKA Sp.Z.o.o.**  
 ODDZIAL GLASSOLUTIONS, 32-312 Jaroszewiec (Poland)

Preparation Storage of the glazing one day before testing in the test rig for conditioning.

## 2 Procedure

### 2.1 Sampling

Sampling	The samples were selected by the client
Quantity	1
Manufacturer	SAINT-GOBAIN POLSKA Sp.Z.o.o.
Date of manufacture / date of sampling	6th of June 2013
Responsible for sampling	Mrs. Seweryn, Anna
Delivery at ift	11th of June 2013 by the client via forwarding agency
ift registration number	34866/2

### 2.2 Process

#### Basis

EN ISO 10140-1:2010 + A1 : 2012 Acoustics; Laboratory measurement of sound insulation of building elements - Part 1: Application rules for specific products (ISO 10140-1:2010+Amd.1:2012)

EN ISO 10140-2:2010 Acoustics; Laboratory measurement of sound insulation of building elements - Part 2: Measurement of airborne sound insulation (ISO 10140-2:2010)

EN ISO 717-1: 1996 + A1:2006 Acoustics; Rating of sound insulation in buildings and of building elements - Part 1: Airborne sound insulation

Corresponds to the national German standard:

DIN EN ISO 10140-1:2012-05, DIN EN ISO 10140-2:2010-12 and DIN EN ISO 717-1 : 2006-11

Procedure and scope of measurement are in conformity with the principles of the Working Group of sound insulation testing bodies approved by the national building supervisory authorities in cooperation with the standardization committee NA 005-55-75-AA (subcommittee UA 1 - DIN 4109).

Boundary conditions	As required in the standard.
Deviation	There are no deviations from the test procedure and/or test conditions.
Test noise	Pink noise

**Airborne sound insulation of building elements**

Test Report 13-001521-PR01 (PB 2-H01-04-en-01) dated 03.07.2013

Client SAINT-GOBAIN POLSKA Sp.z.o.o.  
ODDZIAŁ GLASSOLUTIONS, 32-312 Jaroszewiec (Poland)

Measuring filter	One-third-octave band filter
Measurement limits	
Low frequencies	The dimensions of the receiving room full fills the recommended size for testing in the frequency range from 50 Hz to 80 Hz as per EN ISO 10140-4:2010 Annex A (informative). A moving loudspeaker was used.
Background noise level	The background noise level in the receiving room was determined during measurement and the receiving room level $L_2$ corrected by calculation as per EN 10140-4: 2010 Clause 4.3.
Maximum sound insulation	The Maximum sound insulation of the test set-up was at least 15 dB higher than the measured sound reduction index of the test specimen. Not corrected by calculation.
Measurement of reverberation time	arithmetical mean: two measurements each of 2 loudspeaker and 3 microphone positions (total of 12 independent measurements).
Measurement equation A	$A = 0,16 \cdot \frac{V}{T} \text{ m}^2$
Measurement of sound level difference	Minimum of 2 loudspeaker positions and rotating microphones.
Measurement equation R	$R = L_1 - L_2 + 10 \cdot \lg \frac{S}{A} \text{ in dB}$

## KEY

A	Equivalent absorption area in $\text{m}^2$
$L_1$	Sound pressure level source room in dB
$L_2$	Sound pressure level receiving room in dB
R	Sound reduction index in dB
T	Reverberation time in s
V	Volume of receiving room in $\text{m}^3$
S	Testing area of the specimen in $\text{m}^2$

**2.3 Test equipment**

Device	Type	Manufacturer
Integrating sound meter	Type Nortronic 840	Norsonic-Tippkemper
Microphone preamplifiers	Type 1201	Norsonic-Tippkemper
Microphone unit	Type 1220	Norsonic-Tippkemper
Calibrator	Type 1251	Norsonic-Tippkemper
Dodecahedron loudspeakers	Type 229, 96 Ohm	Norsonic-Tippkemper
Amplifier	Type 235, 100 W	Norsonic-Tippkemper
Rotating microphone boom	Type 231-N-360	Norsonic-Tippkemper



### Airborne sound insulation of building elements

Test Report 13-001521-PR01 (PB 2-H01-04-en-01) dated 03.07.2013

Client SAINT-GOBAIN POLSKA Sp.Z.o.o.  
ODDZIAL GLASSOLUTIONS, 32-312 Jaroszewiec (Poland)

The ift Laboratory for Building Acoustics participates in comparative measurements at the Physikalisch-Technische Bundesanstalt (PTB) in Braunschweig every three years, the last one was in April 2010. The sound level meter used, Series No. 17848, was calibrated by the Dortmund Eichamt (calibration agency) on 19 January 2012. The calibration is valid until 31 December 2014.

## 2.4 Testing

Date 17th of June 2013

Operating Testing Officer Till Stübben

## 3 Detailed results

The values of the measured sound reduction index of the tested Insulating glass unit are plotted as a function of frequency in the annexed data sheet and tabled.

As per EN ISO 717-1 the weighted sound reduction index  $R_w$  and the spectrum adaptation terms  $C$  and  $C_{tr}$  for the frequency range 100 Hz to 3150 Hz obtained by calculation are as follows:

$$R_w (C;C_{tr}) = 35 (-1;-5) \text{ dB}$$

According to EN ISO 717-1 the following additional spectrum adaptation terms are obtained

$C_{50-3150} = -1 \text{ dB}$	$C_{100-5000} = 0 \text{ dB}$	$C_{50-5000} = 0 \text{ dB}$
$C_{tr,50-3150} = -5 \text{ dB}$	$C_{tr,100-5000} = -5 \text{ dB}$	$C_{tr,50-5000} = -5 \text{ dB}$

## 4 Instructions for use

### 4.1 Test value

Basis

DIN 4109:1989-11 Sound insulation in buildings, requirements and verifications

Basis

DIN 4109 Bb1/A1:2003-09 Sound insulation in buildings, examples and calculation methods correction A1

For verification of sound insulation according to DIN 4109, Annex 1 : A1:2003-09, table 40a the weighted sound reduction index  $R_w$  corresponds to the test value  $R_{w,P, GLASS}$

$$R_{w,P, GLASS} = 35 \text{ dB}$$

**Airborne sound insulation of building elements**

Test Report 13-001521-PR01 (PB 2-H01-04-en-01) dated 03.07.2013

Client **SAINT-GOBAIN POLSKA Sp.Z.o.o.**  
**ODDZIAL GLASSOLUTIONS**, 32-312 Jaroszewiec (Poland)



## **4.2 Test standards**

The standard series EN ISO 10140:2010 supersedes those, until the respective date, applicable parts of the standards series EN ISO 140 which describe laboratory tests. According to the two standard series, the test methods are identical.

**ift** Rosenheim  
Laboratory for Building Acoustics  
03.07.2013

# Sound reduction index according to ISO 10140 - 2

Laboratory measurements of airborne sound insulation of building elements



Client: **SAINT-GOBAIN POLSKA Sp.Z.o.o.**  
**ODDZIAL GLASSOLUTIONS**, 32-312 Jaroszewiec (Poland)

Product designation SGG Climaplus

## Design of test specimen

Insulating glass unit  
 External dimension 1230 mm x 1480 mm  
 Pane configuration 6/16/4  
 Filling in cavity Argon  
 Area related mass 24.8 kg/m<sup>2</sup>  
 Pane temperature in 25°C

Test date 17th of June 2013  
 Test surface S 1.25 m x 1.50 m = 1.88 m<sup>2</sup>  
 Test rig as per EN ISO 10140-5  
 Partition wall Double-leaf concrete wall  
 Test noise pink noise  
 Volumes of test rooms V<sub>S</sub> = 109.9 m<sup>3</sup>  
 V<sub>E</sub> = 101.3 m<sup>3</sup>

Maximum sound reduction index  
 R<sub>w,max</sub> = 62 dB (related to test surface)

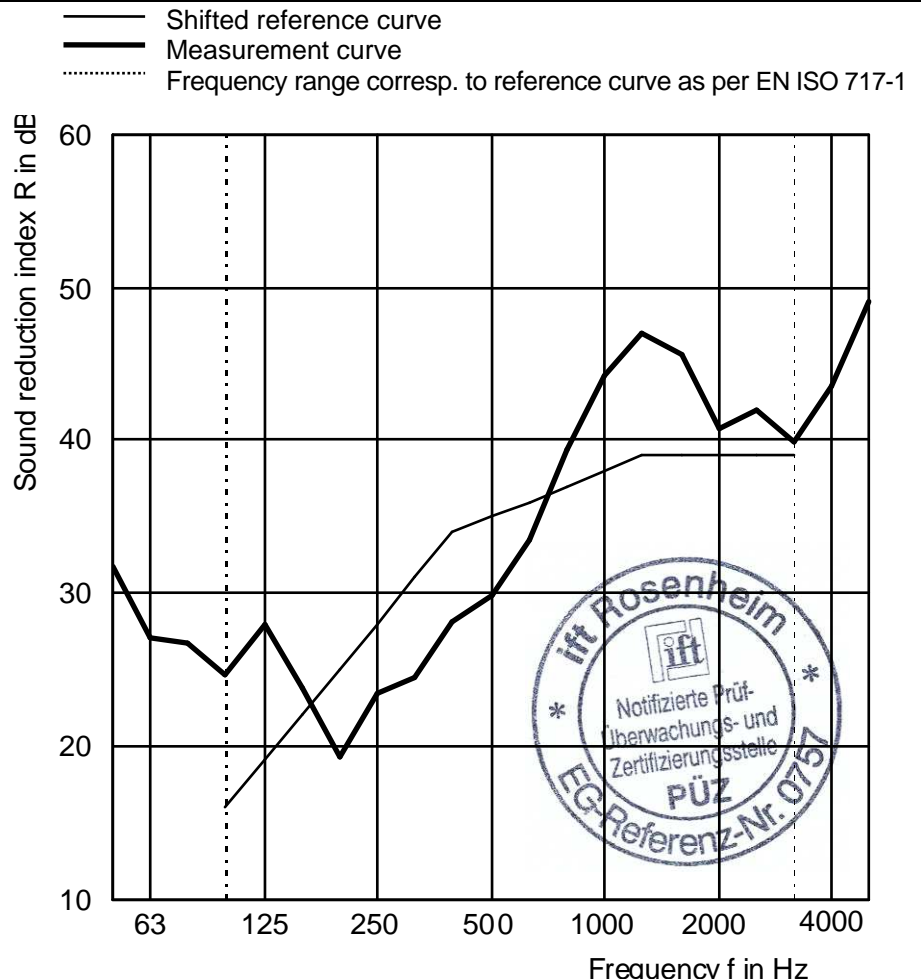
### Mounting conditions

Glass mounted in test opening and held on both sides by glazing beads (25 mm x 25 mm); glass edge sealed on both sides with plastic sealant

Climate in test rooms 25 °C / 60 % RF

Static air pressure 966 hPa

f in Hz	R in dB
50	31.8
63	27.0
80	26.7
100	24.7
125	28.0
160	23.7
200	19.2
250	23.4
315	24.4
400	28.1
500	29.9
630	33.5
800	39.4
1000	44.2
1250	47.0
1600	45.6
2000	40.7
2500	41.9
3150	39.9
4000	43.5
5000	49.0



Rating according to EN ISO 717-1 (in third octave bands):

R<sub>w</sub> (C;C<sub>tr</sub>) = 35 (-1;-5) dB    C<sub>50-3150</sub> = -1 dB; C<sub>100-5000</sub> = 0 dB; C<sub>50-5000</sub> = 0 dB  
 C<sub>tr,50-3150</sub> = -5 dB; C<sub>tr,100-5000</sub> = -5 dB; C<sub>tr,50-5000</sub> = -5 dB

Test report No.: 13-001521-PR01 (PB 2-H01-04-en-01)

Page 7 of 7, Data Sheet No. 1

ift Rosenheim  
 Laboratory for Building Acoustics  
 3. Juli 2013

Dipl. Ing. (FH) Till Stübgen  
 Operating Testing Officer