

# SGG DIAMANT



## Description

SGG DIAMANT offers:

**Aesthetic with a very subtly colored edge of the glass. SGG DIAMANT has a bluish appearance instead of greenish as for a standard clear glass.**

**Optimum transparency:** due to its perfect clarity, SGG DIAMANT allows the true colour of display items to be seen and excellent vision quality when viewing through the glass. The neutrality of its hue is more visible than the windows are thick.

**Unfiltered natural light** enters the interior of a building. The full impact of a room, its decor and objects can be achieved with optimum light and undistorted colours.

**High energy transmittance** for applications requiring the use of solar energy or high solar heat gain.

**Reduction of the heating of glazing and the risks of thermal breakage** due to a low energy absorption, lower than SGG PLANICLEAR. SGG COOL-LITE, are available on order, on the SGG DIAMANT substrate.

## Applications

SGG DIAMANT is suited for all residential or commercial applications requiring high transparency, clear aesthetics and optical brilliance:

- [Façades](#)

- Windows, bay windows
- Verandas, canopies
- [Interior design or decorating](#)
- Furniture
- Shop windows and display cabinets

## Range

Thicknesses available : 4, 6, 10, 12, 15, 19mm

Standard dimension is 6000 x 3210 mm.

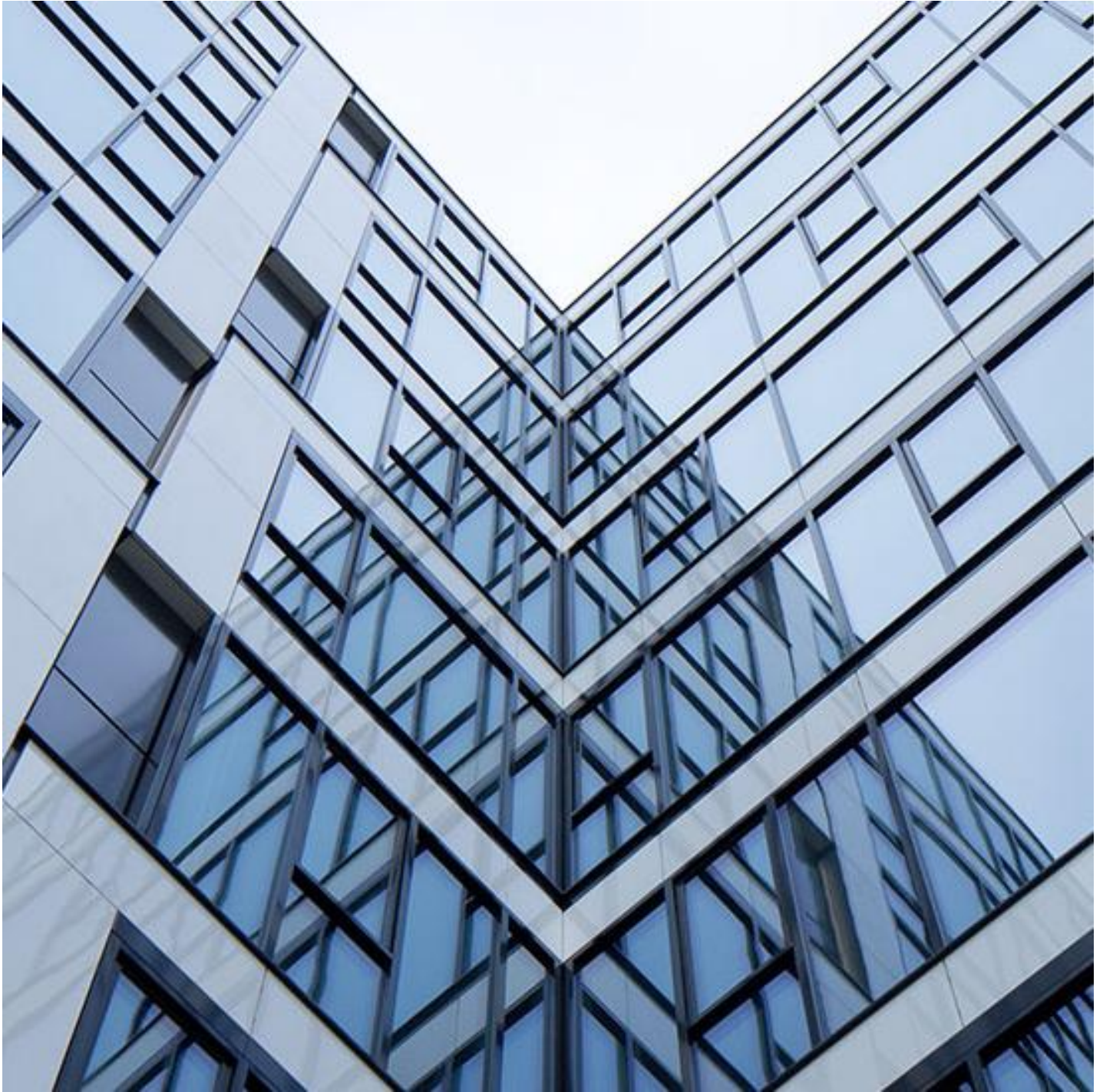
Sizes available up to 18000 mm x 3200 mm

## Performance

Thickness	mm	3	4	5	6	8	10	12	15
Weight	kg/m2	7.5	10	12.5	15	20	25	30	37.5
Light Transmission	%	91	91	91	91	91	90	90	90
UV	%	87	86	85	83	81	80	78	76
Absorption	%	2	2	3	3	4	5	6	7
Solar Factor	gEN 410	0.91	0.90	0.90	0.90	0.89	0.88	0.88	0.87
Shading Coefficient	SC	1.04	1.04	1.03	1.03	1.02	1.02	1.01	1.00



## Possible Associations



SGG COOL-LITE SKN



SGG PLANITHERM® FAMILY





SGG STADIP®



SGG BIOCLEAN



DECORATIVE GLASS FOR INTERIOR DESIGN

[Find a distributor](#)